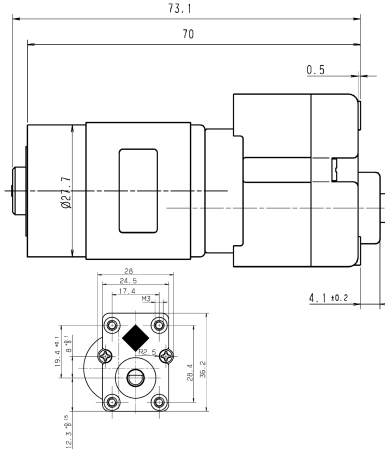


Design Data	
Commutation	Brushed
Direction of rotation	Bi-directional
Bearing type	



Motor picture



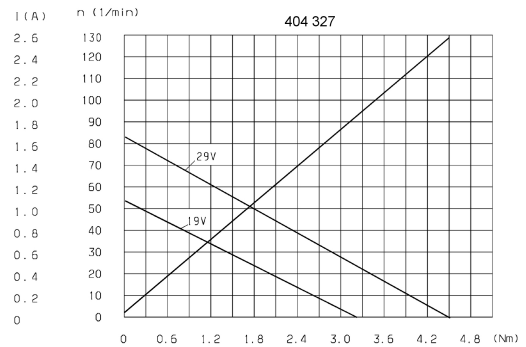
Performance data		
Rated voltage [V]	U_N	24
Nominal torque [Nm]	M_N	0.50
No-load speed [min^{-1}]	n_0	65.0
Nominal power [W]	P_N	2.84
Nominal current [A]	I_N	0.4
Nominal force [kN]	F_N	0.00
Duty cycle		s3

Sensor data	
Pulses	0
Output channels	0

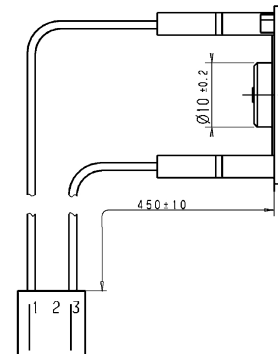
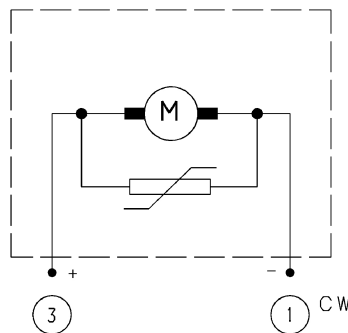
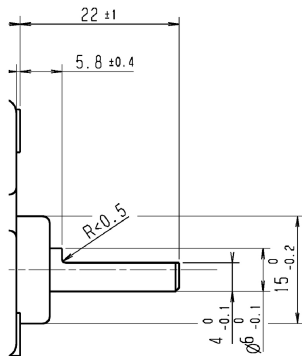
Other data	
Gear ratio	109/1
Gear wheel material	
Suppression components	
Enclosure class	IP40
Weight [kg]	0.180

Remarks:

Characteristic curves



Output shaft drawing (W), Wiring diagrams (S) and Connector layout (K)



Housing: AMP-Nr. 1-480 700-0
 Pins: AMP-Nr. 350 687-1