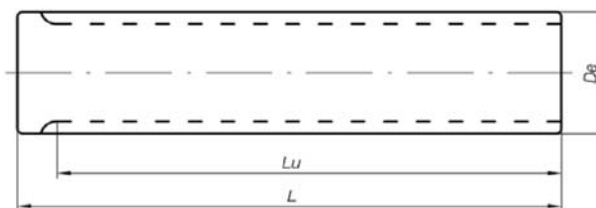


Barre Dentate Passo Metrico Metric Pitch Timing Bars



T2,5 (passo 2,5 mm) / T2,5 (2,5 mm pitch)

T5 (passo 5 mm) / T5 (5 mm pitch)

	Alluminio/Aluminium					
	Codice Code	N° Denti Teeth	Dp	De	Lu	L
T2,5-10	10	7,96	7,44	50	75	
T2,5-12	12	9,55	9,03	50	75	
T2,5-13	13	10,35	9,83	50	75	
T2,5-14	14	11,14	10,62	50	75	
T2,5-15	15	11,94	11,42	50	75	
T2,5-16	16	12,73	12,21	50	75	
T2,5-17	17	13,53	13,01	50	75	
T2,5-18	18	14,32	13,80	50	75	
T2,5-19	19	15,12	14,60	90	120	
T2,5-20	20	15,92	15,40	90	120	
T2,5-21	21	16,71	16,19	90	120	
T2,5-22	22	17,51	16,99	125	140	
T2,5-23	23	18,30	17,78	125	140	
T2,5-24	24	19,10	18,58	125	140	
T2,5-25	25	19,89	19,37	125	140	
T2,5-26	26	20,69	20,17	125	140	
T2,5-27	27	21,49	20,97	125	140	
T2,5-28	28	22,28	21,76	125	140	
T2,5-29	29	23,08	22,56	125	140	
T2,5-30	30	23,87	23,35	125	140	
T2,5-32	32	25,47	24,95	125	140	
T2,5-34	34	27,06	26,54	125	140	
T2,5-35	35	27,85	27,33	132	140	
T2,5-36	36	28,65	28,13	132	140	
T2,5-38	38	30,24	29,72	140	140	
T2,5-40	40	31,83	31,31	140	140	
T2,5-42	42	33,42	32,90	140	140	
T2,5-44	44	35,02	34,50	140	140	
T2,5-45	45	35,81	35,29	140	140	
T2,5-48	48	38,20	37,68	140	140	
T2,5-50	50	39,79	39,27	160	160	
T2,5-60	60	47,75	47,23	160	160	
T2,5-65	65	51,73	51,21	160	160	
T2,5-70	70	55,71	55,19	160	160	
T2,5-72	72	57,30	56,78	160	160	
T2,5-90	90	71,62	71,10	160	160	
T2,5-100	100	79,58	79,06	160	160	

	Alluminio e Acciaio/Aluminium & Steel					
	Codice Code	N° Denti Teeth	Dp	De	Lu	L
T5-10	10	15,92	15,09	125	140	
T5-11	11	17,51	16,68	125	140	
T5-12	12	19,10	18,27	125	140	
T5-13	13	20,69	19,86	125	140	
T5-14	14	22,28	21,45	140	140	
T5-15	15	23,87	23,04	140	140	
T5-16	16	25,47	24,64	140	140	
T5-17	17	27,06	26,23	140	140	
T5-18	18	28,65	27,82	140	140	
T5-19	19	30,24	29,41	140	140	
T5-20	20	31,83	31,00	160	160	
T5-21	21	33,42	32,59	160	160	
T5-22	22	35,02	34,19	160	160	
T5-23	23	36,61	35,78	160	160	
T5-24	24	38,20	37,37	160	160	
T5-25	25	39,79	38,96	160	160	
T5-26	26	41,38	40,55	160	160	
T5-27	27	42,97	42,14	160	160	
T5-28	28	44,56	43,73	160	160	
T5-29	29	46,16	45,33	160	160	
T5-30	30	47,75	46,92	160	160	
T5-32	32	50,93	50,10	160	160	
T5-34	34	54,11	53,28	160	160	
T5-35	35	55,71	54,88	160	160	
T5-36	36	57,30	56,47	160	160	
T5-37	37	58,89	58,06	160	160	
T5-38	38	60,48	59,65	160	160	
T5-40	40	63,66	62,83	160	160	
T5-42	42	66,85	66,02	160	160	
T5-44	44	70,03	69,20	160	160	
T5-45	45	71,62	70,79	160	160	
T5-46	46	73,21	72,38	160	160	
T5-48	48	76,40	75,57	160	160	
T5-50	50	79,58	78,75	160	160	
T5-60	60	95,50	94,67	160	160	
T5-64	64	101,86	101,03	160	160	
T5-72	72	114,59	113,76	160	160	
T5-80	80	127,33	126,50	160	160	
T5-90	90	143,24	142,41	160	160	
T5-100	100	159,16	158,33	160	160	