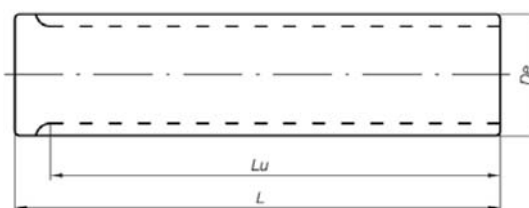


Barre Dentate Passo Metrico Metric Pitch Timing Bars



ATP10 (passo 10mm)/ATP10 (10mm pitch)

	Alluminio / Aluminium - Acciaio / Steel				
	Codice Code	N° Denti Teeth	Dp	De	L
ATP10-15	15	47,75	46,15	160	
ATP10-16	16	50,93	49,33	160	
ATP10-17	17	54,11	52,51	160	
ATP10-18	18	57,30	55,70	160	
ATP10-19	19	60,48	58,88	160	
ATP10-20	20	63,66	62,06	160	
ATP10-21	21	66,85	65,25	160	
ATP10-22	22	70,03	68,43	160	
ATP10-23	23	73,21	71,61	160	
ATP10-24	24	76,39	74,79	160	
ATP10-25	25	79,58	77,98	160	
ATP10-26	26	82,76	81,16	160	
ATP10-27	27	85,94	84,34	160	
ATP10-28	28	89,13	87,53	160	
ATP10-29	29	92,31	90,71	160	
ATP10-30	30	95,49	93,89	160	
ATP10-32	32	101,86	100,26	160	
ATP10-34	34	108,23	106,63	160	
ATP10-35	35	111,41	109,81	160	
ATP10-36	36	114,59	112,99	160	
ATP10-38	38	120,96	119,36	160	
ATP10-40	40	127,32	125,72	160	
ATP10-42	42	133,69	132,09	160	
ATP10-44	44	140,06	138,46	160	
ATP10-45	45	143,24	141,64	160	
ATP10-48	48	152,79	151,19	160	
ATP10-52	52	165,53	163,92	160	
ATP10-60	60	190,99	189,39	160	

ATP15 (passo 15mm)/ATP15 (15mm pitch)

	Alluminio / Aluminium - Acciaio / Steel				
	Codice Code	N° Denti Teeth	Dp	De	L
ATP15-18	18	45,90	83,84	160	
ATP15-19	19	49,08	88,62	160	
ATP15-20	20	95,49	93,39	160	
ATP15-21	21	100,27	98,17	160	
ATP15-22	22	105,04	102,94	160	
ATP15-23	23	109,82	107,72	160	
ATP15-24	24	114,59	112,49	160	
ATP15-25	25	119,37	117,27	160	
ATP15-26	26	124,14	122,04	160	
ATP15-27	27	128,92	126,82	160	
ATP15-28	28	133,69	131,59	160	
ATP15-29	29	138,46	136,36	160	
ATP15-30	30	143,24	141,14	160	
ATP15-32	32	152,79	150,69	160	
ATP15-34	34	162,34	160,24	160	
ATP15-35	35	167,11	165,01	160	
ATP15-36	36	171,89	169,79	160	
ATP15-38	38	181,44	179,34	160	
ATP15-40	40	190,99	188,89	160	
ATP15-42	42	200,54	198,44	160	
ATP15-44	44	210,08	207,98	160	
ATP15-45	45	214,86	212,76	160	
ATP15-48	48	227,08	229,18	160	
ATP15-52	52	248,28	246,18	160	
ATP15-60	60	286,48	284,38	160	
ATP15-64	64	305,58	303,48	160	
ATP15-72	72	343,77	341,67	160	
ATP15-80	80	381,97	379,87	160	