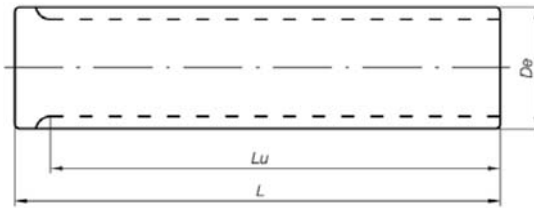


Barre Dentate Passo Metrico Metric Pitch Timing Bars



AT3 (passo 3 mm) / AT3 (3 mm pitch)

AT5 (passo 5 mm) / AT5 (5 mm pitch)

	Alluminio/Aluminium					
	Codice Code	N° Denti Teeth	Dp	De	Lu	L
	AT3-15	15	14,32	13,91		75
	AT3-16	16	15,28	14,87		75
	AT3-17	17	16,23	15,82		75
	AT3-18	18	17,19	16,78		75
	AT3-19	19	18,14	17,73		90
	AT3-20	20	19,10	18,69		90
	AT3-21	21	20,05	19,64		90
	AT3-22	22	21,01	20,60		90
	AT3-23	23	21,96	21,55		120
	AT3-24	24	22,92	22,51		120
	AT3-25	25	23,87	23,46		120
	AT3-26	26	24,83	24,42		120
	AT3-27	27	25,78	25,37		140
	AT3-28	28	26,74	26,33		140
	AT3-29	29	27,69	27,28		140
	AT3-30	30	28,65	28,24		140
	AT3-32	32	30,56	30,15		140
	AT3-34	34	32,47	32,06		140
	AT3-35	35	33,42	33,01		140
	AT3-36	36	34,38	33,97		140
	AT3-37	37	35,33	34,92		140
	AT3-38	38	36,29	35,88		140
	AT3-39	39	37,24	36,83		140
	AT3-40	40	38,20	37,79		140
	AT3-42	42	40,11	39,70		140
	AT3-44	44	42,02	41,61		140
	AT3-45	45	42,97	42,56		140
	AT3-46	46	43,93	43,52		140
	AT3-48	48	45,84	45,43		140
	AT3-50	50	47,75	47,34		160
	AT3-52	52	49,66	49,25		160
	AT3-54	54	51,57	51,16		160
	AT3-60	60	57,30	56,85		160
	AT3-65	65	62,07	61,66		160
	AT3-70	70	66,85	66,44		160
	AT3-72	72	68,75	68,34		160
	AT3-90	90	85,94	85,53		160
	AT3-100	100	95,49	95,08		160

	Alluminio e Acciaio/Aluminium & Steel					
	Codice Code	N° Denti Teeth	Dp	De	Lu	L
	AT5-12	12	19,10	17,87	140	140
	AT5-13	13	20,69	19,46	140	140
	AT5-14	14	22,28	21,05	140	140
	AT5-15	15	23,87	22,64	140	140
	AT5-16	16	25,47	24,24	140	140
	AT5-17	17	27,06	25,83	140	140
	AT5-18	18	28,65	27,42	140	140
	AT5-19	19	30,24	29,01	140	140
	AT5-20	20	31,83	30,60	160	160
	AT5-21	21	33,42	32,19	160	160
	AT5-22	22	35,02	33,79	160	160
	AT5-23	23	36,61	35,38	160	160
	AT5-24	24	38,20	36,97	160	160
	AT5-25	25	39,79	38,56	160	160
	AT5-26	26	41,38	40,15	160	160
	AT5-27	27	42,97	41,74	160	160
	AT5-28	28	44,56	43,33	160	160
	AT5-29	29	46,16	44,93	160	160
	AT5-30	30	47,75	46,52	160	160
	AT5-31	31	49,34	48,11	160	160
	AT5-32	32	50,93	49,70	160	160
	AT5-34	34	54,11	52,88	160	160
	AT5-35	35	55,71	54,48	160	160
	AT5-36	36	57,30	56,07	160	160
	AT5-38	38	60,48	59,25	160	160
	AT5-40	40	63,66	62,43	160	160
	AT5-42	42	66,85	65,62	160	160
	AT5-44	44	70,03	68,80	160	160
	AT5-45	45	71,62	70,90	160	160
	AT5-46	46	73,21	71,98	160	160
	AT5-48	48	76,40	75,17	160	160
	AT5-50	50	79,58	78,35	160	160
	AT5-60	60	95,50	94,27	160	160
	AT5-64	64	101,86	100,63	160	160
	AT5-72	72	114,59	113,36	160	160