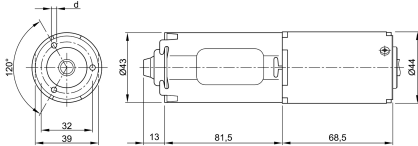


Design Data	
Commutation	Brushed
Direction of rotation	Bi-directional
Bearing type	sleeve bearing

Performance data		
Rated voltage [V]	U_N	24
Nominal torque [Nm]	M_N	4.00
No-load speed [min^{-1}]	n_0	200.0
Nominal power [W]	P_N	69.8
Nominal current [A]	I_N	8.0
Nominal force [kN]	F_N	0.00
Duty cycle	s2	

0231 B



Sensor data	
Pulses	39
Output channels	2

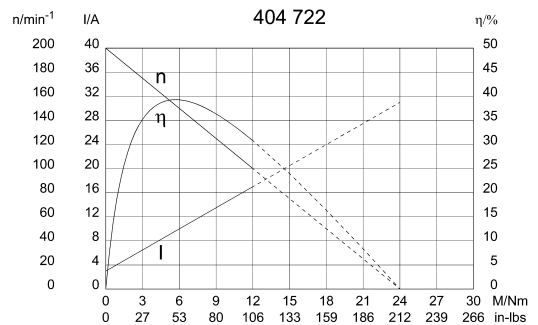
Other data	
Gear ratio	39.7/1
Gear wheel material	plastic
Suppression components	4,0 μ H, 1nF
Enclosure class	IP 30
Weight [kg]	0.650

Remarks: d = 3,3mm, for self-cutting screw 4mm

Motor picture

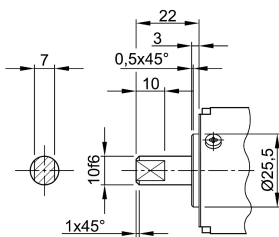


Characteristic curves

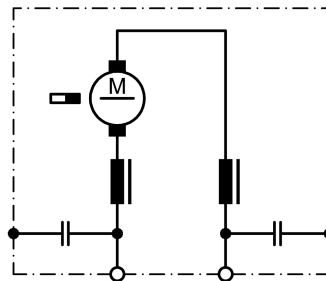


Output shaft drawing (W), Wiring diagrams (S) and Connector layout (K)

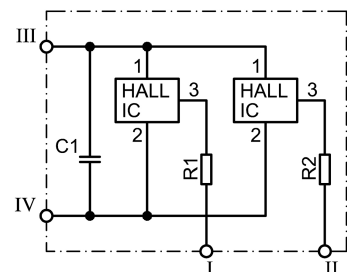
W 249



S 30



S 109



- I Terminal 1, OUT A1, grey
- II Terminal 2, OUT A2, black
- III Terminal 3, +, white
- IV Terminal 4, -, red

