

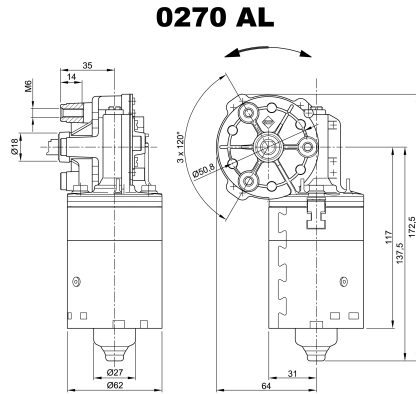
| Design Data | |
|-----------------------|----------------|
| Commutation | Brushed |
| Direction of rotation | Bi-directional |
| Bearing type | |

| Performance data | | |
|-------------------------------------|-------|-------|
| Rated voltage [V] | U_N | 12 |
| Nominal torque [Nm] | M_N | 1.00 |
| No-load speed [min^{-1}] | n_0 | 260.0 |
| Nominal power [W] | P_N | 23.0 |
| Nominal current [A] | I_N | 10.0 |
| Nominal force [kN] | F_N | 0.00 |
| Duty cycle | s1 | |

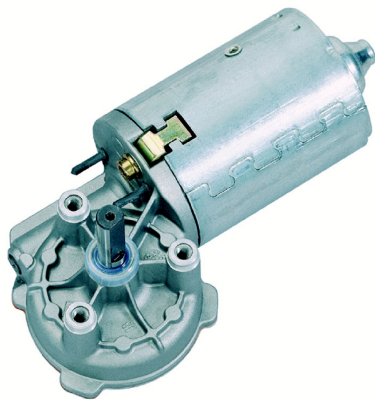
| Sensor data | |
|-----------------|---|
| Pulses | 0 |
| Output channels | 0 |

| Other data | |
|------------------------|---------|
| Gear ratio | 41/4 |
| Gear wheel material | Plastic |
| Suppression components | |
| Enclosure class | |
| Weight [kg] | 1.200 |

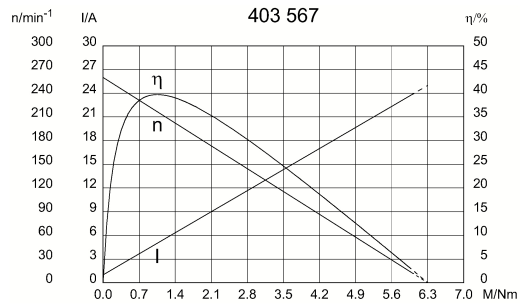
Remarks:



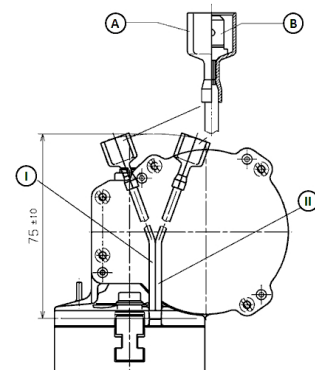
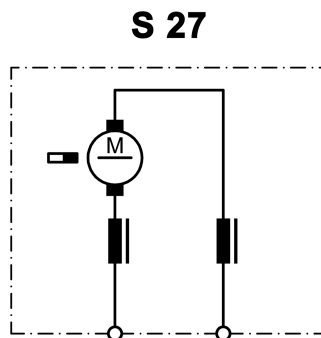
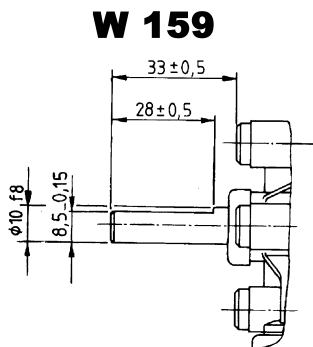
Motor picture



Characteristic curves



Output shaft drawing (W), Wiring diagrams (S) and Connector layout (K)



A: housing MST AMP No. 2-521055-2
 B: spade terminals 6.3 x 0.8 DIN 46 244
 I: red
 II: green